

Add-on for the Microsoft

Flight Simulator

X



aerosoft™

MEGA
AIRPORT

HELSINKI

Manual



Developed by:	A-Flight
Manual:	William Lennox
Installation:	Andreas Mügge
Protection:	Maria Plet

Copyright: © 2012 / **Aerosoft GmbH**
Airport Paderborn/Lippstadt
D-33142 Büren, Germany

Tel: +49 (0) 29 55 / 76 03-10
Fax: +49 (0) 29 55 / 76 03-33

E-Mail: info@aerosoft.de
Internet: www.aerosoft.de
 www.aerosoft.com



All trademarks and brand names are trademarks or registered of their respective owners. All rights reserved.



Mega Airport Helsinki

Manual

Add-on for

Microsoft Flight Simulator X

Content

The airport.....	5
General Information.....	5
Technical Information.....	6
Starting Off.....	7
Credits	7
System Requirements.....	7
Copyrights.....	8
Installation and Removal	8
Activation	8
Activation via the menu „Aerosoft Add-Ons“	11
Aerosoft LAUNCHER (optional)	12
Tweaking Tool	14



The Airport

General Information

Helsinki Vantaa Airport is the main international airport of the Helsinki metropolitan area and the whole of Finland. The airport is located in Vantaa which is approx 17 km to the north of Helsinki city center. It was originally built in for the 1952 Summer Olympics and is nowadays the fourth largest airport of the Nordic countries.

Operated by Finavia the airport was voted the best airport in the world in 1999 and according to a survey it is one of the most punctual airports today.

With its three runways it is perfectly set for a steady growth for all kinds of aircraft which can be accommodated here. The three runways also allow for an efficient clearing of snow and ice during the winter months to ensure a flawless service. Helsinki Vantaa is the main hub for Finnair, the Finnish flag carrier, Blue 1, the Finnish regional division of SAS. Airlines which also maintain a base here are Norwegian Air Shuttle and Flybe Nordic. Until 2009 the airports terminals were divided into international and domestic terminals. Today both terminals are connected through a passage way and service all flights.

There is a business park called the Aviopolis right next to the airport with numerous companies. A train link to the center of Helsinki is still under construction but should be ready for service in 2014. Right now connections to the city are via the bus line 615 as well as through Shuttle buses by Finnair.

Technical Information

Identification	Flughafen Helsinki-Vantaa
ICAO-Code	EFHK
IATA-Code	HEL
Elevation	55 m / 179 feet
Position	N 60° 19' 2" - E 24° 57' 48"
Runway 04L/22R	10039 ft / 3060 m
Runway 04R/22L	11286 ft / 3440 m
Runway 15/33	9518 ft / 2901 m

Frequencies

TWR	118.60
GROUND	121.80
Delivery	118.12
ATIS	123.125

Nav aids

ILS RWY 04L	111.90
ILS RWY 04R	111.50
ILS RWY 22R	110.70
ILS RWY 22L	110.30
ILS RWY 15	109.10



Starting Off

Credits

We would like to say thank you to all people supporting us to create this scenery project for Microsoft Flight Simulator X.

We would also like to thank all beta testers, that make sure the product is available in the actual quality.

Aerosoft GmbH

System Requirements

- Microsoft Flight Simulator X (SP2, Acceleration Pack or Gold Edition)
- Operating system: Windows XP/Vista/7
- Processor (CPU): 2,6 GHz Dual Core processor
- 2 GB RAM
- DX9 graphics card with at least 256 MB (512 MB recommended)
- DirectX: 9.0c or better
- Download-Size: 320 MB
- Installations-Size: 600 MB

Only for Flight Simulator X:

Before you can use this product in Flight Simulator an online registration is required. You will need an active internet connection for this registration.

Copyrights

This software, the manual, documentation, video images and all the related materials are protected by copyright laws. The software is licensed, not sold. You may install and run one copy of the software on one computer for your personal, non-commercial use. The software, the manual and all related materials must not be copied, photocopied, translated, reverse engineered, decompiled or reduced to any electronic medium or machine legible form, neither completely nor in part, without the previous written permission of AEROSOFT GmbH.

Installation and Removal

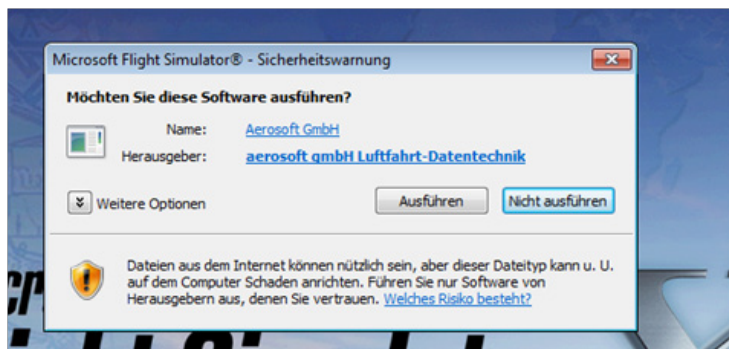
Installation is simple. Start the exe file you downloaded and follow the instructions on your screen. Make sure FSX/X-Plane is closed and we do advise you to reboot your system before installing. Make sure you are logged on as Administrator on the machine! Removal should never be done manually but only using the software removal applet you will find the Windows Control panel.

Activation

The Aerosoft-FSX-menu can be called up inside Microsoft Flight Simulator X as follows

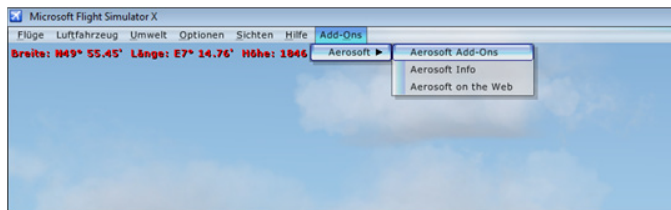
Add-Ons | Aerosoft | Aerosoft Add-Ons

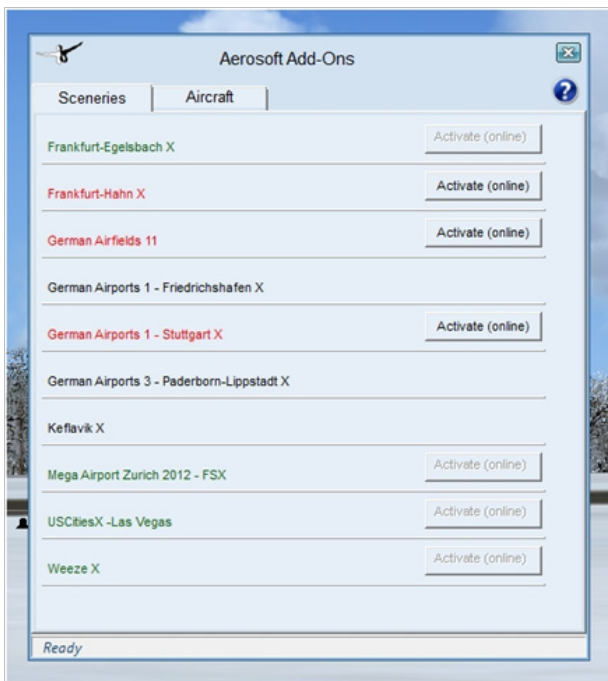
During installation Aerosoft system data will be integrated in FSX. After the next start of FSX you will see the following window:



Click on the „execute“ button and on „YES“ in the next dialogue box... If you don't agree in accepting the modules, the sceneries will not be displayed correctly.

The „Aerosoft Add-Ons“ – window is an alternative to activate and display the status of activation of Aerosoft products (FSX).





Status will be shown as follows in the Aerosoft Add-Ons window:

Add-On does not require an (Activation not required)

Add-On requires an activation (Product needs an activation)

Add-On is activated (Product activated)

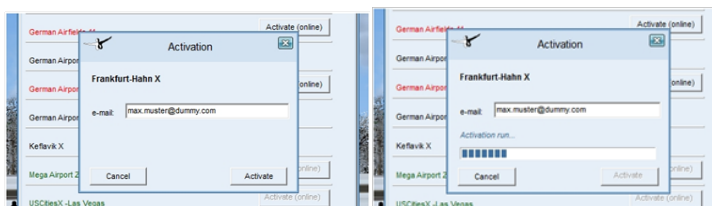
The Help window (click on the question mark) will show an example of an activation status. This dialogue only shows add-ons which show corresponding entries in the registry. This mainly concerns all new installers which have been distributed since the introduction of the Aerosoft-Launcher. Therefore older add-ons may not be shown here.



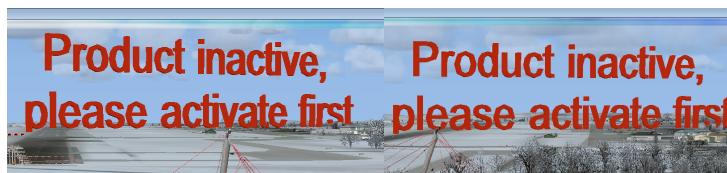
Activation via the menu „Aerosoft Add-Ons“

Add-ons displayed in red require an activation.

Click on the „Activate (online)“ – button. Please insert your email address (the one you have used during the installation) in the next window... Click on the „Activate“ – button to start the activation process.



Should the add-on need an activation and you have failed to activate it, a warning will appear on the runway of the scenery.

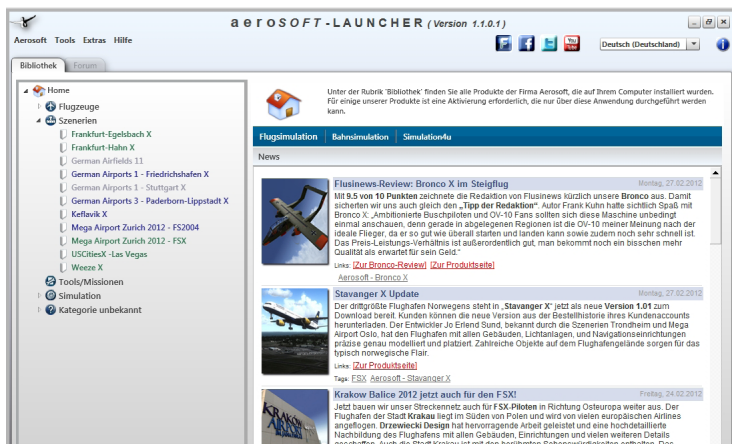


Please note that after a successful activation the display of scenery objects may take a short while to appear correctly. The status check for the license key takes place during the loading of the Aerosoft add-on menu inside of Flight Simulator. Depending on the activation status a new activation might be needed.

My PC has no internet connection. What now?

In this case please use the Launcher offline-option which is able to send required data via email or fax to our support. If no internet connection is available the required data can be sent from another PC with internet connection.

Aerosoft LAUNCHER (optional)



The Aerosoft-Launcher gives you an overview of all Aerosoft products installed on your computer. You will also have easy access to special features available for the several products. Should the SOFTWARE PRODUCT require an Online Registration, the Aerosoft LAUNCHER will take you through this process. The Aerosoft-LAUNCHER will be automatically installed with the SOFTWARE PRODUCT and will launch at the end of the install process. You can run the Aerosoft-Launcher at any time via the Windows START menu to check the activation state of your installed SOFTWARE PRODUCTS. Just follow this link:

START | ALL PROGRAMS | AEROSOFT | Aerosoft Launcher

The Aerosoft-Launcher starts up in the "Library" view by default. Here you can see an overview of all installed Aerosoft SOFTWARE



PRODUCTS and their state of activation.

The following categories will be shown.

“Aircraft”, “Sceneries”, “Tools/Missions”, “Category-Unknown” and “Simulation”.

The SOFTWARE PRODUCT will be placed in one of these categories accordingly during installation. Older SOFTWARE PRODUCTS which do not need an online activation will be placed in the category “Category-Unknown”. In the “Library” view you will also see an overview of current Aerosoft News

How do I activate a SOFTWARE PRODUCT?

If necessary please change to the “Library” view and select the SOFTWARE PRODUCT for activation. Click on the button “activate”.

Check your email address and your registration key is correct and click on „Online activation“. Please note you will need an active internet connection for this procedure. Your registration data will be transferred to our Aerosoft server now. Your information will now be transferred to the Aerosoft server. After a successful transfer your system will be activated and used without further limitations.

Please note that depending on the safety settings some data of the Aerosoft SOFTWARE PRODUCT need to be personalized.

Tweaking Tool

As Mega Airport Helsinki is an extremely high detailed scenery with high resolution textures it can put a strain on some PC systems, especially older ones. To optimize the performance of your system we are offering some options to influence the graphics with our Tweaking Tool. If you encounter any kind of low performance issues we

recommend experimenting with this tool to find the best alternative for your system while still being able to enjoy this scenery.

You can find the Tweaking Tool under: START-PROGRAMS-AEROSOFT-MEGA AIRPORT-HELSINKI

Options:

1. "Enable apron baggage carts": Removes/adds baggage carts
2. "Enable apron static vehicles" : Removes/adds vehicles
3. "Enable landside scenery" : Removes/adds landside scenery
4. "Enable cars" : Removes/adds cars
5. "Enable approach lightpoles and antennas" : Removes/adds approach lights and antennas
6. "Enable 3D taxi lights" _ Removes/adds taxi lights
7. "Enable trees" : Removes/adds custom trees
8. "Winter trees" : When checked, replaces tree textures with custom winter tree textures
9. "Using addon mesh such as FsGlobal" (Enabled by default)
10. "Ultra high-res pavement details" : active when checked
11. "Ultra high-res terminal details": active when checked
12. „Full surrounding scenery“ : active when checked
13. „Winter snowbanks“: active when checked



<http://www.aerosoft.com>
<http://www.forum.aerosoft.com>

Mega Airport Helsinki -Tweaking tool-

Aerosoft GmbH
Lindberghring 12
33142 Büren-Ahden

Tel.: ++49 (0) 2955/7603-10
Fax.: ++49 (0) 2955/7603-33

info@aerosoft.com
support@aerosoft.com

FSX Folder

Select...

- ☒ Enable apron baggage carts
- ☒ Enable apron static vehicles
- ☒ Enable landside scenery
- ☒ Enable cars
- ☒ Enable approach lightpoles and antennas
- ☒ Enable 3D taxiways
- ☒ Enable trees ☐ Winter trees
- ☐ Ultra high-res pavement details ☐ Using addon mesh such as FsGlobal
- ☐ Ultra high-res terminal textures
- ☐ Full surrounding scenery
- ☐ Winter snowbanks

 Close

Apply current settings

Copyright 2007-2012 Aerosoft GmbH info@aerosoft.com

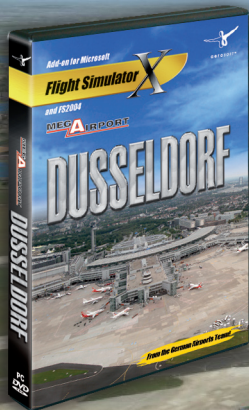
V1.10

Enter The World Of Flight Simulation!
www.aerosoft.com



MEGA **A**IRPORT

DUSSELDORF



The airport Dusseldorf comes as an absolute realistic 3D model for the Microsoft Flight Simulator X and FS2004 in its actual real world state. Based on an aerial image from 2012 it contains all buildings and objects.

